

# FLUID HANDLING

## Filter Cart

A portable, offline filtration system that's ideal for mineral-based industrial fluids and a wide range of applications.



# Overview

## The Filter Cart:

### Where It's Used

- Decontaminating systems
- Flushing new or repaired systems
- Dispensing oil
- Pre-filtering new oil
- Evacuating used oil
- Topping off reservoirs
- Collecting oil samples for analysis

### What Is Standard?

- Automatic pump pressure relief valve
- Dual-stage filtration
- Pump inlet strainer
- Pneumatic wheels for easy mobility
- Pre- and post-filter sample ports
- Filter bypass flow valve
- Heavy-duty frame with oil catch pan
- Industrial powder-coated paint
- One-year warranty

### What Can I Customize?

- Flow rates
- Color
- Micron rating of filters
- Power configurations

## Technical Data

### Pump Type:

- Gear Pump

### Electric motor:

- 0,75 kW 110v 50 Hz 1400rpms
- 0,75 kW 230v 50 Hz 1400rpms

### Permissible flow rate:

- 18 l/min maximum

### Operating pressure:

- 6 bar maximum

### Viscosity range:

- 10-460 cSt (60 - 2270 SSU)

### Permissible operating fluid:

- Mineral oil (others on request)

### Permitted fluid temperature range:

- -10°C to 60°C

### Permitted ambient temperature:

- -10°C to 40°C

### Seals:

- NBR

### Suction strainer:

- 250µm

### Protection class:

- IP 54

### Length of power cable:

- 5 meters

### Length of hoses:

- 4 meters

### Hose connections:

- Suction hose 1" ISO B
- Pressure hose 3/4" ISO B

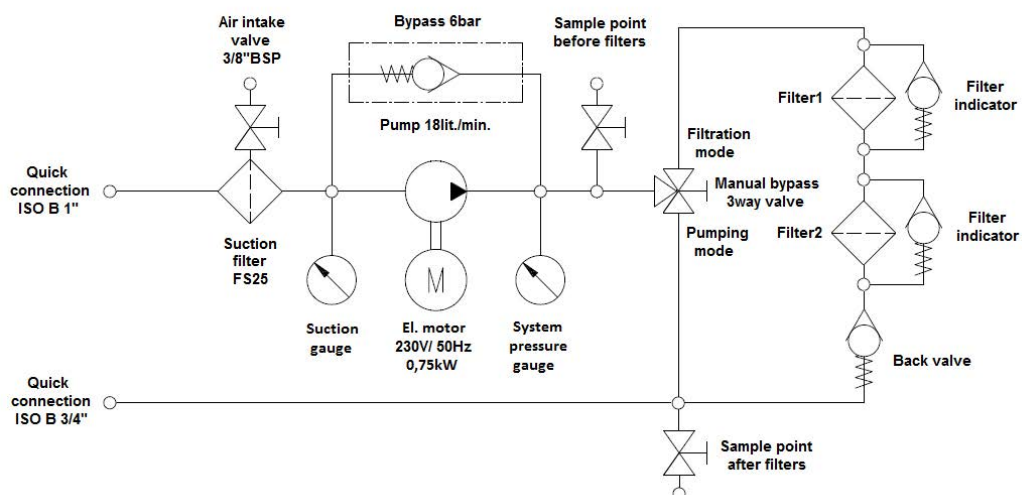
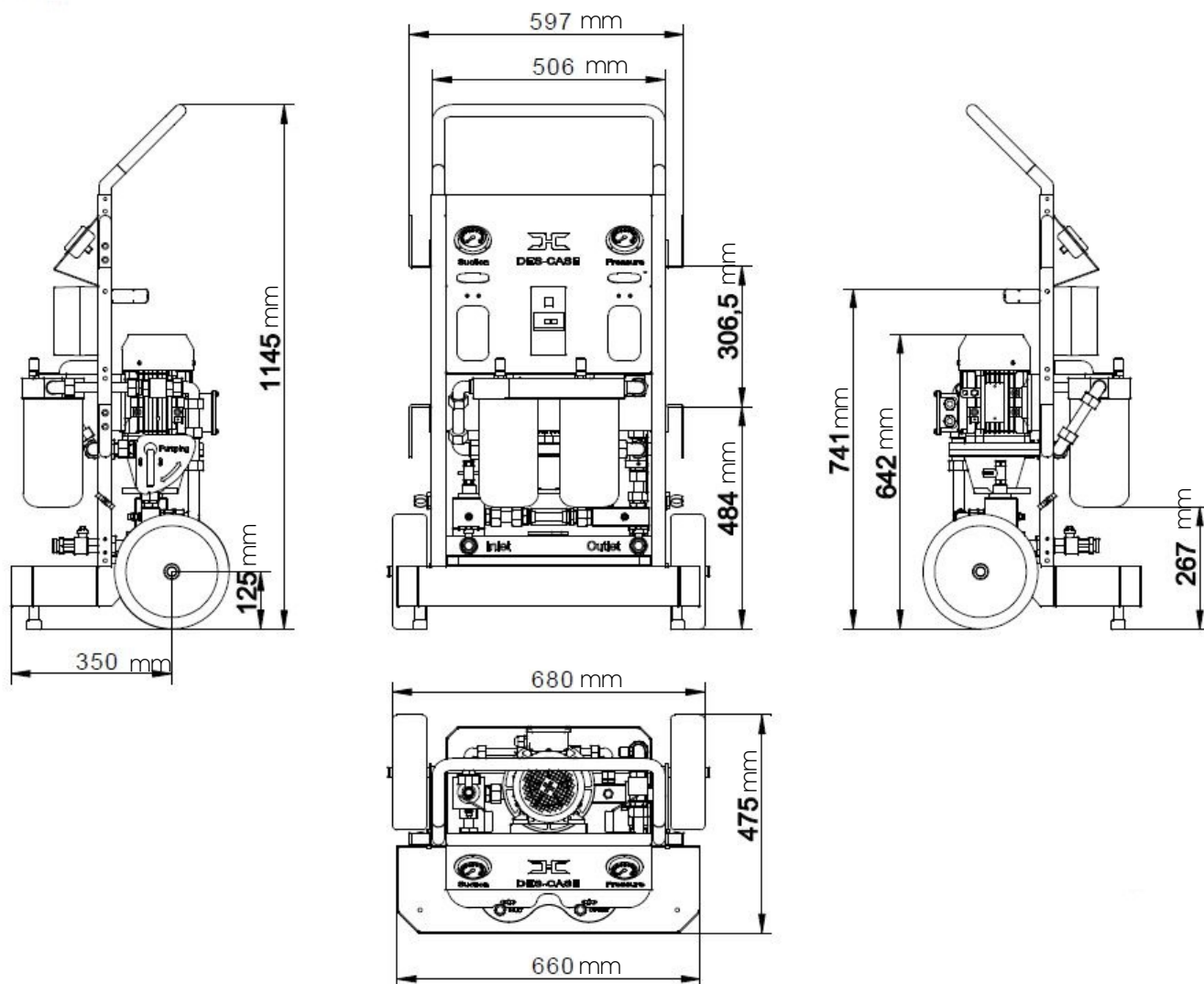
### Weight when empty:

- ≈ 70 kg

### Equipment:

- Suction Gauge - Visual
- Pressure Gauge - Visual
- Differential Clogging Indicator (1.55 bar) Visual

# Dimensions



# Model Code

## Filter Cart

EFC										
	Box 1	Box 2	Box 3	Box 4	Box 5	Box 6	Box 7	Box 8	Box 9	Box 10

### Pump/Motor Combinations [Box 1]

Code	Description
10G	10 lpm/0,75 kW, 110 V, 50 Hz, 1400 rpms
18G	18 lpm/0,75 kW, 110 V, 50 Hz, 1400 rpms
10H	10 lpm/0,75 kW, 230 V, 50 Hz, 1400 rpms
18H	18 lpm/0,75 kW, 230 V, 50 Hz, 1400 rpms

### Drain & Fill Connector Type [Box

Code	Description
R	ISO B Connector-BSPP

### Drain & Fill Sizing [Box

Code	Description
1	<b>Drain:</b> 1" hose & connection <b>Fill:</b> ¾" hose & connection

### Filter A [Box 4]/Filter B [Box

Code	Description
A	5-micron Particulate Filter
B	7-micron Particulate Filter
C	12-micron Particulate Filter
D	22-micron Particulate Filter
J	Water Filter

### Manual Filter Bypass [Box 6]

Code	Description
B	Filter Bypass

### Cord [Box 8]

Code	Description
C	5 m cord

### Sample Valves [Box 7]

Code	Description
2	Standard Minimes

### Strainer [Box 9]

Code	Description
S	Strainer

### Custom Colors [Box 10]

Code	Description
1	Brushed Aluminum
2	Black
3	White
4	Blue
5	Red
6	Yellow

## Replace Your Elements

Part No.	Micron Rating
DC-S10000S08BBU	Beta 1000 @ 5µm
DC-S10000S08CBU	Beta 1000 @ 7µm
DC-S10000S08EBU	Beta 1000 @ 12µm
DC-S10000S08FBU	Beta 1000 @ 22µm
DC-S10000W08FBU	Water Removal Beta 1000